



millenium
PROPERTIES

Luxury villa with large garden in Peissy (Satigny)

Satigny

Loyer net : CHF 8'900.-

Présentation

Agency : Millenium Properties

Ref : SCH 2412

Ideally located in the heart of the village of Peissy, in the commune of Satigny, this elegant detached villa is distinguished by its generous volumes, the quality of its materials and its verdant surroundings.

The property develops a living area of around 350 m² and benefits from well-appointed features, including solid wood parquet flooring, a fully equipped contemporary kitchen as well as an alarm system.

Distribution

Ground floor:

- Entrance hall
- Visitors' WC
- Spacious kitchen with central island, open onto the terrace
- Living room with fireplace and adjoining dining room (approx. 75 m²), with direct access to outside
- Bedroom or study
- Guest suite with shower room and WC

Floor:

- Parent suite with dressing room and bathroom / WC
- Two bedrooms
- Shower room / WC
- Second suite with dressing room and bathroom / WC

Basement (fully heated):

- Large multi-purpose room (games room, home cinema, fitness, etc..)
- Technical room (oil-fired boiler)
- Wine cellar
- Storage spaces
- Cellar with outside access

Exteriors:

The property is set on a beautiful plot, fully planted with trees and fenced, offering a peaceful and privileged living environment.

- Covered for two vehicles
- Courtyard allowing parking for several cars

Situation :

At just 20 minutes from Geneva, the villa benefits from quick access to motorway routes.

Public transport nearby:

- Bus line 54 (direction Vernier)
- Station with direct link to Geneva Cornavin

Monthly rent: CHF 8'900.- Garden maintenance included

Contact

Stéphane Hernandez
41 78 335 55 00
sch@milleniumproperties.ch

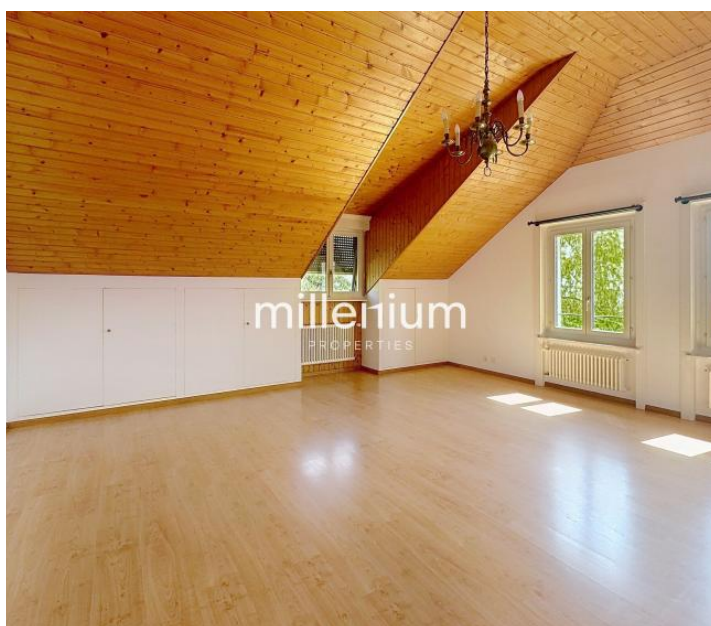
Millenium Properties
Boulevard du Théâtre 5, 1204 Geneva
41 22 342 44 12

350.00 m²
Surface

9.00
Pièces

6
Chambres

Galerie



Informations techniques

Transaction

Type	Maison/Villa
Référence	SCH 2412/1
Charges	N.C
Disponibilité	À convenir

Surfaces

Pièces	9
Chambres	6
Salle de bain	4
Surface habitable	350 m ²
Surface du terrain	2000 m ²
