

millenium  
PROPERTIES

## Attique d'exception avec terrasse à Champel (meublé)

Genève

**Loyer net : CHF 7'500.-**

# Présentation

---

Agence : Millenium Properties  
Réf : LM/KM 2392

In the heart of the highly sought-after Champel district, discover this sumptuous furnished penthouse apartment offering an exclusive lifestyle that combines absolute comfort with high-end amenities.

Fully furnished with premium furniture and refined finishes, this property stands out for its warm and elegant atmosphere.

Upon entering, a spacious entrance hall harmoniously distributes the reception areas.

The bright living room with fireplace opens onto a balcony, creating an elegant and welcoming living space. The adjoining dining room extends this environment, ideal for entertaining.

The fully equipped contemporary kitchen meets the highest standards and includes a washing machine and dryer, ensuring optimal everyday comfort.

The sleeping area consists of:

- A spacious master suite with en-suite bathroom and built-in storage
- A second bedroom suite with private shower room and storage (*option: two single beds or one double bed*)
- A guest WC

Outside, a balcony and a pleasant terrace allow you to enjoy a quiet and privileged environment.

Additional features:

- Electric blinds and shutters
- WiFi connection
- Television
- Cellar
- Optional closed garage box: CHF 350.–

A rare property on the market, ideal for clients seeking an exceptional pied-à-terre or a turnkey residence in one of Geneva's most desirable neighborhoods.

Rent: CHF 7,500.–

Contact :

Kari Marill-Hernandez  
+41 79 572 19 97  
km@milleniumproperties.ch

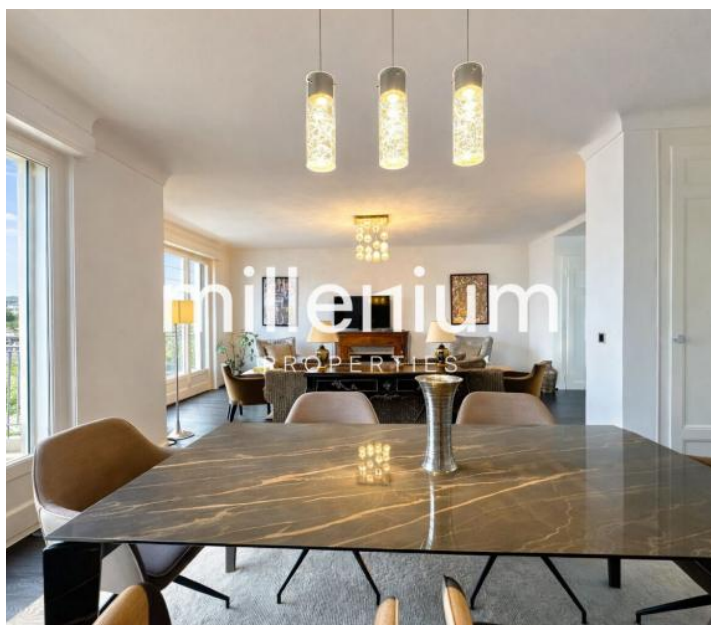
MILLENIUM PROPERTIES  
Boulevard du théâtre 5, 1204 Genève  
<https://www.milleniumproperties.ch>  
+41 22 342 44 12

**180.00 m<sup>2</sup>**  
Surface

**5.50**  
Pièces

**2**  
Chambres

# Galerie



## Informations techniques

---

### Transaction

---

Type	Appartement
Référence	LM/KM 2392/2
Charges	N.C
Disponibilité	À convenir

---

### Surfaces

---

Pièces	5.5
Chambres	2
Salle de bain	2
Surface habitable	180 m <sup>2</sup>

---